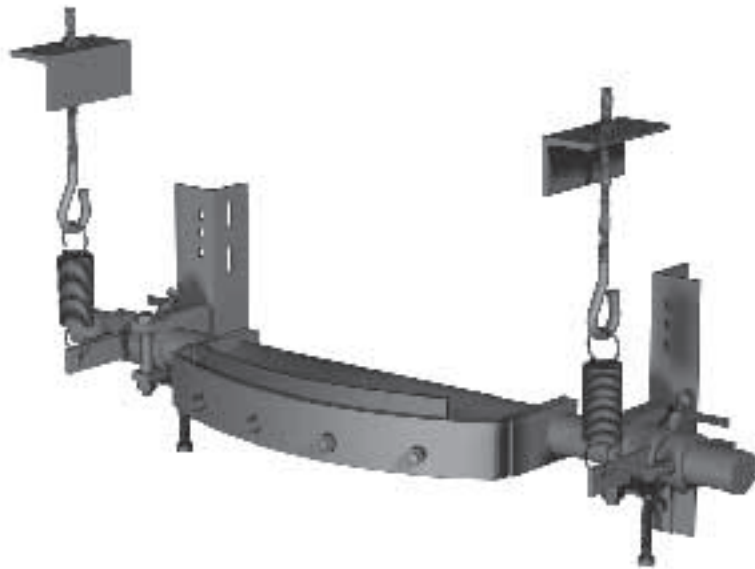




5 Belt cleaners

series D



5.3.4 - Belt cleaners series D patented for uni-directional belts

Awareness of improved savings by utilising belt cleaning systems has resulted in requests for simplified equipment but with ever increasing efficiency.

The conception of this proposed cleaner is certainly revolutionary.

Characteristics and indications of use:

The cleaner type D is characteristic of a new technology.

It consists of a series of carbon steel blades, welded to a curved support. The assembly constitutes a unique scraper blade, inserted into a strong structural arc mounted on special bearings.

Although there is vertical adjusting, the system is under spring pressure which acts to rotate the curved structure as a whole. The pressure of the blade is therefore stronger at the centre. The pressure is however controlled by a regulating screw.

The cleaning effect is therefore correspondingly higher in the central part, where there is normally the most residue of material to remove, and becomes less as it decreases towards the edge.

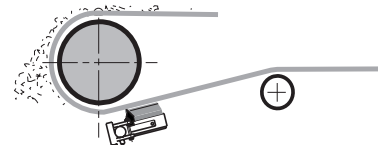
In this way the scraper is acting at its most efficient where the areas of high wear are normally encountered on the blade and the belt.

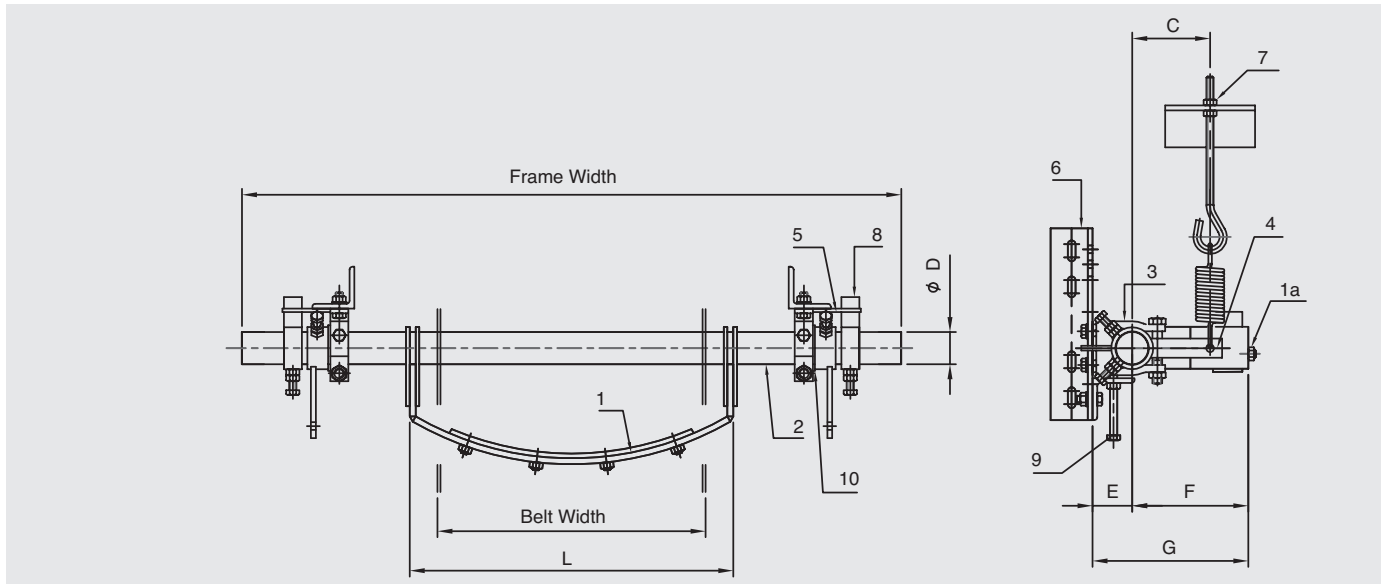
Thanks to the scraper and unique blade being formed into an arc the material that is removed has no tendency to build up or to block the cleaning action itself.

The scraper blade is the only replaceable component that will exhibit wear in time. It is easily and rapidly replaced without further disassembly of the scraper insitue.

This type of universal belt cleaner is particularly recommended to be used on high speed uni-directional conveyor belts, when the conveyed material is very wet and sticky.

Even greater belt cleaning performance may be obtained by using this cleaner linked with cleaner series H.





- 1 - Blade
- 1a - Blade fixing screws
- 2 - Frame
- 3 - Clamp
- 4 - Spring tensioning system
- 5 - Rotation stopper plate
- 6 - Bracket
- 7 - Pressure adjustment
- 8 - Rotation stopper
- 9 - Height adjustment screw
- 10 - Rotation bush



Belt Cleaner type	Belt width mm	Frame width mm	L	C	Ø D	E	F	G	Weight Kg
D	450	1100	540	130	54	66	183	249	30
D	500	1200	590	130	54	66	189	255	31
D	600	1300	690	130	54	66	202	268	33
D	750	1500	840	130	54	66	220	286	36
D	800	1550	890	130	54	66	232	298	37
D	900	1700	990	130	54	66	238	304	39
D	1000	1800	1090	130	54	66	250	316	41
D	1200	2100	1290	130	54	66	275	341	53
D	1350	2300	1490	130	54	66	307	373	57
D	1500	2400	1590	130	54	66	290	356	68
D	1600	2500	1690	130	54	66	270	336	73

Example of ordering

Cleaner type D, 1400